

Hemeroscopium  
Madrid

Anton Garcia-Abril  
& Ensemble Studio

# HEMEROSCOPIUM



Project Hemeroscopium House  
Location Las Rozas, Madrid, Spain  
Architect Anton Garcia-Abril  
Project Team Elena Perez, Debora Mesa,  
Jorge Consuegra, Marina Otero, Ricardo Sanz  
Quantity Surveyor Javier Cuesta  
Builder Materia Inorganica  
Photographer Roland Halbe

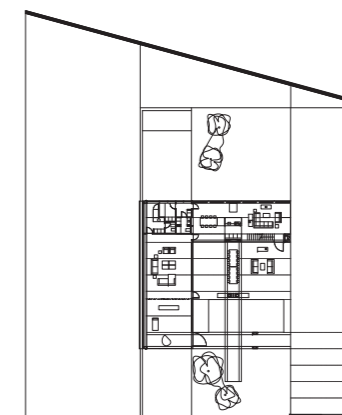
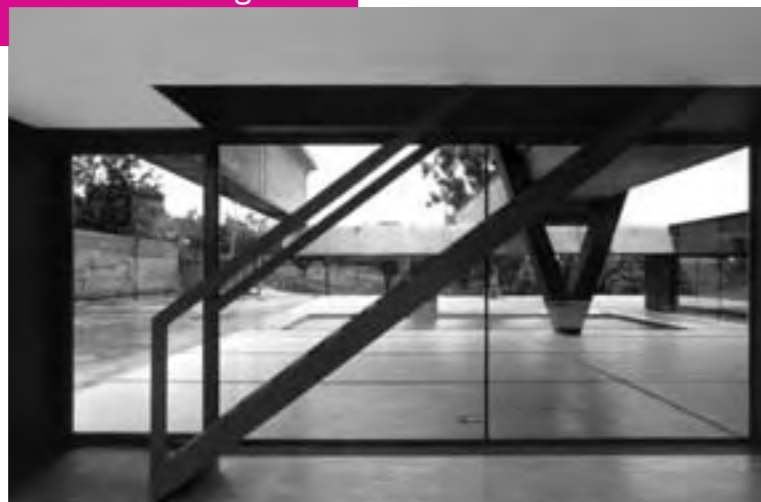




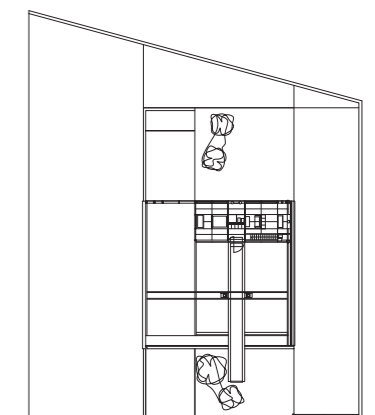
**Project Statement**

In Greek, Hemeroscopium is a place where the sun sets. An allusion to a place that exists only in our minds, in our senses, that is ever-changing and mutable, but is nonetheless real. It is delimited by the references of the horizon, by the physical limits, defined by light, and it happens in time. Hemeroscopium House traps a domestic space and a distant horizon. And it does so playing a game with structures placed in an apparently unstable balance that enclose the living spaces allowing the vision to escape. Heavy structures and big actions, placed in a way to provoke gravity, to move space. In this way it defines the place. The order in which these structures are piled-up generates a helix that sets out from a stable support, the mother beam, and moves upwards in a sequence of elements that become lighter as the structure grows, ending at a point that culminates the system of equilibrium. Seven elements in total. The design of their joints responds to their constructive nature, to their forces; and their stresses express the structural condition they have. By the way this structure is set, the house becomes aerial, light, transparent, and the spaces retained within flow with life. The apparent simplicity of the structure's joints requires in fact the development of complex calculations, due to the reinforcement, and the pre-stress and post-tension of the steel rods that tie the web of beams. It took us a year to engineer the structure but only seven days to build, thanks to a total prefabrication of the different elements and a perfectly coordinated rhythm of assembly. All of our efforts were directed at developing a technique that would allow us to create a very specific space. And thus, a new astonishing language is invented, where form disappears giving way to the naked space. Hemeroscopium House materializes the peak of its equilibrium with what in Ensamble Studio we ironically call the "G point", a twenty ton granite stone, expression of the force of gravity and a physical counterweight to the whole structure. Antón García-Abril

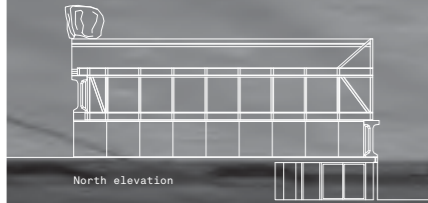
A helix that sets out from a stable support, the mother beam, and moves upwards in a sequence of elements that become lighter as the structure grows



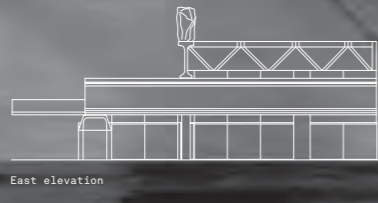
Floor plans level 1



Floor plans level 2



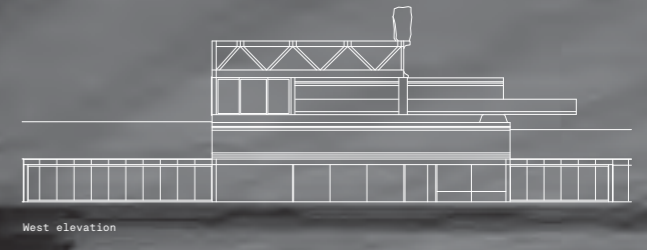
North elevation



East elevation



South elevation



West elevation



Seven structural elements – five concrete beams and two steel truss beams – arranged in an apparently unstable composition of parts, enclosed on all sides by glass

